

T/ERRA V/VA

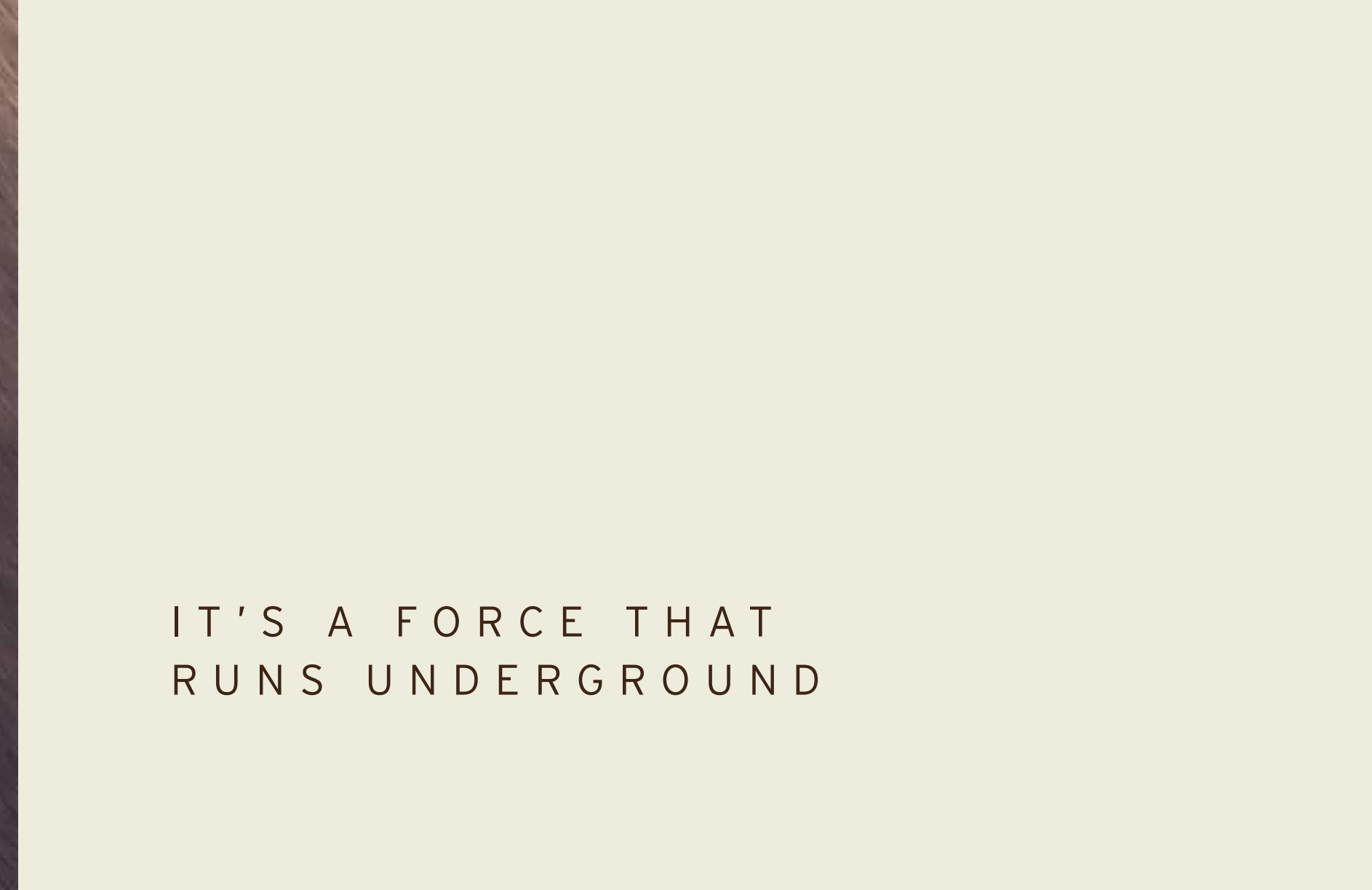
DARGLOBAL



DESIGN INSPIRED BY
AUTOMOBILI LAMBORGHINI



YOU CAN FEEL IT
UNDER YOUR FEET



IT'S A FORCE THAT
RUNS UNDERGROUND

Disclaimer: All pictures, plans, layouts, information, data and details included in this brochure are indicative only and may change at any time up to the final 'as built' status in accordance with final designs of the project, regulatory approvals and planning permissions. All accessories and interior finishes such as wallpaper, chandeliers, furniture, electronics, white goods, curtains, hard and soft landscaping, pavements, features, gym, and other elements displayed in the brochure, or between the plot boundary, are not part of the unit and are shown for illustrative purposes only.





DARGLOBAL



T/ERRA V/IVA

MAGNETIC
ATTRACTION

A powerful territory and an icon of energy. When they come together, the supernatural happens. The land shakes, the land becomes alive. Tierra Viva Benahavís – Costa Del Sol, is an exclusive residential community of luxury villas, with design inspired by Automobili Lamborghini.

An architectural prodigy brought to life by DarGlobal, debuting for the first time in Spain.



THE MYTH

Founded in 1963, Automobili Lamborghini is the epitome of luxury super sports cars made of innovative technology and futuristic lines. An Italian excellence that is still based in Sant'Agata Bolognese where it all started.

The true essence of Lamborghini DNA is represented in this futuristic and elegant architectural project complemented with interiors inspired by the super sports car design, thanks to incomparable craftsmanship and passion.

DARGLOBAL





DARGLOBAL



COSTA DEL SOL

Exclusive yet relaxed.
Fashionable yet characteristic.
Connected yet nested.
Costa Del Sol has it all.

Costa del Sol offers a gentle
mild climate all year long,
with proximity to all the
main destinations in Spain
and Europe thanks to
high-speed trains and an
international airport nearby.



DARGLOBAL



Vibrant and attractive, Costa Del Sol hosts tons of stylish clubs, restaurants and hotels, as well as shopping areas, exclusive marinas and breathtaking beaches.





DARGLOBAL



BENAHAVÍS

Benahavís ranks as one of the wealthiest municipalities in Spain thanks to the luxurious golf clubs and resorts that surround the area. In recent years, it has emerged as one of the most desirable locations on Costa del Sol to buy property, in a natural haven of peace and beauty within easy reach of Marbella.

GENIUS LOCI

The Ancient Romans believed some places had divine qualities, Tierra Viva is one of them. Nestled on divine hills outside Los Jaralillos, in the exclusive area of Benahavís, the property is located just 8 minutes away from Marbella and 5 minutes from the shores.

With 12 golf clubs, charming Andalusian villages and the stylish Puerto Banús in the surroundings, Tierra Viva offers a peaceful retreat in the middle of a vibrant community.





COSTA DEL SOL

DARGLOBAL



La Zagaleta

Marbella Club
Golf Resort

BENAHAVIS

TIERRA VIVA

MARBELLA

Marbella Club
Golden Mile

Nobu Hotel
Marbella

Puerto Banús

Anantara Villa
Padierna Palace



SPAIN

- 05 MIN MEDITERRANEAN SHORES
- 12 MIN PUERTO BANÚS
- 16 MIN MARBELLA CLUB GOLDEN MILE
- 18 MIN NOBU HOTEL MARBELLA
- 40 MIN GIBRALTAR
- 45 MIN MÁLAGA-COSTA DEL SOL AIRPORT

T/ERRA V/VA

PROMINENT POSITION

Tierra Viva is a luxury residential complex of 53 unique villas sitting gently on the side of a hill, with every villa standing on a different height.

DARGLOBAL





DARGLOBAL



MEDITERRANEAN IN THE EYES

The prestigious position of Tierra Viva overlooking the coastline, allows every villa to enjoy endless panoramas of the Mediterranean Sea.

A soothing vision for the soul.



A PLETHORA OF
HIGH-END AMENITIES
FEW MINUTES AWAY

Descending from Tierra Viva is Puerto Banús, where a luxurious offering of designer boutiques, sport cars parading, exclusive nightclubs, and fine dining experiences populate the picturesque waterfront.

T/ERRA V/IVA



T/ERRA V/VA

DARGLOBAL



Views of Marbella and the Costa Del Sol, as seen from the vantage point of Tierra Viva.

T/ERRA V/VA

DARGLOBAL



DARGLOBAL





HIDDEN TREASURES

Sharp lines and finest materials are the unique traits of the luxury villas in Tierra Viva.

As supernatural gems coming out of the land itself, they are named after the most precious stones.



DIAMANTE VILLAS
(6-BEDROOMS)



ZAFIRO VILLAS
(5-BEDROOMS)



ESMERALDA VILLAS
(4-BEDROOMS)

DARGLOBAL



DIAMANTE VILLAS

T/ERRA V/IVA

DIAMANTE VILLAS

Majestic and superb, the Diamante Villas are spread on four levels, host 6 bedrooms and know no compromises.

Spacious roof terraces with breath-taking Mediterranean Views are the perfect set for family and social gatherings, while the extensive swimming pool and luxuriant gardens make this villas the perfect setting for an unforgettable holiday that can last for a lifetime.



T/ERRA V/VA

/ DIAMANTE VILLAS

DARGLOBAL



T/ERRA V/VA

/ DIAMANTE VILLAS

DARGLOBAL



T/ERRA V/VA

/ DIAMANTE VILLAS

DARGLOBAL



T/ERRA V/VA

/ DIAMANTE VILLAS

DARGLOBAL



DARGLOBAL



ZAFIRO VILLAS

TIERRA VIVA



ZAFIRO VILLAS

Refined, classy and sophisticated, the 4-level Zafiro Villas sit gently on the hillside, offering stunning views from every room, especially from the panoramic rooftop. With 5 bedrooms and plenty of common spaces, they feature a wine cellar, a multipurpose room that can easily become a gym and a massive pool area for unforgettable memories.



T/ERRA V/VA

/ ZAFIRO VILLAS

DARGLOBAL



T/ERRA V/VA

/ ZAFIRO VILLAS

Iconic, grand, full of light. Inside the Zafiro Villas everything is sophisticated. Tailor-made finishings and high-end materials enhance the generous open-spaces, for a sublime living experience.



DARGLOBAL



T/ERRA V/VA

/ ZAFIRO VILLAS

DARGLOBAL



T/ERRA V/VA

/ ZAFIRO VILLAS

DARGLOBAL



DARGLOBAL



ESMERALDA VILLAS

T/ERRA V/VA

ESMERALDA VILLAS

Every day is a summer day in the Esmeralda Villas, the 4-bedroom residences with glorious terraced gardens and exclusive pool areas.

Here, everything was created to offer the most relaxing and unwinding experience, like the steam & sauna rooms and the home theatre in the basement floor.



T/ERRA V/VA

/ ESMERALDA VILLAS

DARGLOBAL



T/ERRA V/VA

/ ESMERALDA VILLAS

DARGLOBAL



T/ERRA V/VA

/ ESMERALDA VILLAS

DARGLOBAL



T/ERRA V/VA

/ ESMERALDA VILLAS

DARGLOBAL



T/ERRA V/VA

/ ESMERALDA VILLAS

DARGLOBAL



T/ERRA V/VA

/ ESMERALDA VILLAS

DARGLOBAL





FEATURES, SPECIFICATIONS & FLOOR PLANS

DISCLAIMER

All pictures, plans, layouts, information, data and details included in this brochure are indicative only and may change at any time up to the final 'as built' status in accordance with final designs of the project, regulatory approvals and planning permissions. All accessories and interior finishes such as wallpaper, chandeliers, furniture, electronics, white goods, curtains, hard and soft landscaping, pavements, features, gym, and other elements displayed in the brochure, or between the plot boundary, are not part of the unit and are shown for illustrative purposes only.



AN EXCLUSIVE COMMUNITY WITH 24/7 PREMIUM SECURITY

/ Located within the gated community of Los Jaralillos - Benahavís, Tierra Viva prides itself on providing a private and secure environment for its residents with premium 24/7 security services.





PERSONAL PARADISE

/ Each villa within Tierra Viva comes with its own private pool, offering a chance to create a personal oasis for serene moments and unforgettable memories.





TIERRA VIVA MASTERPLAN

-  DIAMANTE VILLAS
6-bedrooms
-  ZAFIRO VILLAS
5-bedrooms
-  ESMERALDA VILLAS
4-bedrooms



GOLF VIEWS

SEA VIEWS ↘





SPECIFICATIONS

All villas come with concrete boundary walls, double glazed windows, cooling and heating system, leveled and graded outdoor spaces, precast concrete pavers on driveway and parking.

Each villa features an exquisite pool and beautifully crafted hardscape.

Note: The villas do not come with any furniture nor softscaping.

FOYER

FLOOR	Local Marble or equivalent
SKIRTING	Local Marble or equivalent
WALLS	Plastered walls with emulsion paint
CEILING	Gypsum ceiling with emulsion paint
ELEVATOR	Passenger elevator

LIVING ROOM / DINING

FLOOR	Local Marble or equivalent
SKIRTING	Local Marble or equivalent
WALLS	Plastered walls with emulsion paint
CEILING	Gypsum ceiling with emulsion paint

BEDROOMS

FLOOR	Porcelain Marble Look or equivalent
SKIRTING	Porcelain Marble Look or equivalent
WALLS	Plastered walls with emulsion paint
CEILING	Gypsum ceiling with emulsion paint
WARDROBE	Joinery with lacquered or laminate finish

KITCHEN

FLOOR	Porcelain Marble Look or equivalent
SKIRTING	Porcelain Marble Look or equivalent
WALLS	Wall panels
CEILING	Gypsum ceiling with emulsion paint
COUNTERTOP	Engineered Stone or equivalent
CABINETS	Joinery with lacquered or laminate finish
APPLIANCES	Built-in appliances (Fridge, Oven, Hob, Hood, and Dishwasher). Brand: Miele or equivalent

BATHROOMS

FLOOR	Porcelain Marble Look or equivalent
WALLS	Porcelain Marble Look or equivalent
CEILING	Moisture resistant gypsum ceiling finished with paint
COUNTERTOP	High quality solid surface or equivalent
JOINERY	Joinery with lacquered / laminate finish
SANITARY FIXTURES	Duravit or equivalent
SANITARYWARE	Duravit, Kohler or equivalent
MIRROR	Included





SPECIFICATIONS

SERVICE KITCHEN

FLOOR	Porcelain tile or equivalent
SKIRTING	Porcelain tile or equivalent
WALLS	Wall panels
CEILING	Gypsum ceiling with emulsion paint
COUNTERTOP	Engineered Stone or equivalent
CABINETS	Joinery with lacquered / laminate finish

BASEMENT HALLWAY

FLOOR	Porcelain Marble Look or equivalent
SKIRTING	Porcelain Marble Look or equivalent
WALLS	Plastered walls with emulsion paint
CEILING	Gypsum ceiling with emulsion paint

SPA ROOM

Mechanical, electrical and plumbing provisions will be provided.

COUNTERTOP	High Quality Solid Surface or equivalent
JOINERY	Joinery with lacquered / laminate finish
SANITARY FIXTURES	Duravit or equivalent
SANITARYWARE	Duravit, Kohler or equivalent
MIRROR	Included

** Lockers, bench and furniture not included*

SAUNA & STEAM

Mechanical, electrical and plumbing provisions will be provided.

HOME THEATRE

FLOOR	Porcelain tile or equivalent
SKIRTING	Porcelain tile or equivalent
WALLS	Plastered walls with emulsion paint
CEILING	Gypsum ceiling with emulsion paint

** Carpet, furniture and electronics not included*

MULTIPURPOSE ROOM/GYM

FLOOR	Porcelain Marble Look or equivalent
SKIRTING	Porcelain tile or equivalent
WALLS	Plastered walls with emulsion paint
CEILING	Gypsum ceiling with emulsion paint

** Gym equipment not included*

MAIDS, STORAGE & LAUNDRY

FLOOR	Porcelain tile or equivalent
SKIRTING	Porcelain tile or equivalent
WALLS	Plastered walls with emulsion paint
CEILING	Gypsum ceiling with emulsion paint

MAIDS BATHROOMS

FLOOR	Porcelain tile or equivalent
WALLS	Porcelain tile or equivalent
CEILING	Moisture resistant gypsum ceiling finished with paint
COUNTERTOP	Solid Surface or equivalent
SANITARY FIXTURES	Duravit or equivalent
SANITARYWARE	Duravit, Kohler or equivalent
MIRROR	Included



DIAMANTE VILLAS

6 - BED

SQM 1,254 - 1,450

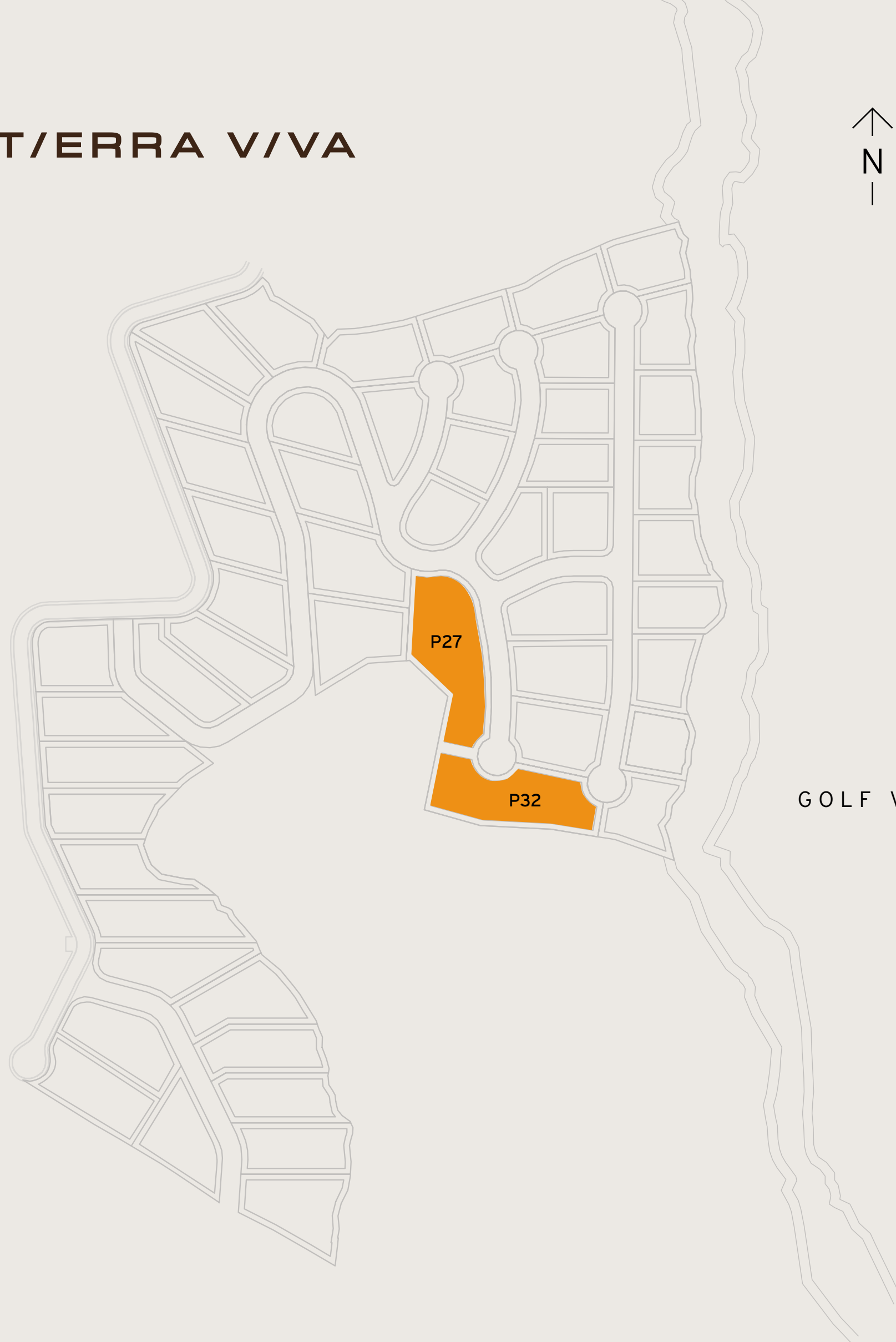
SQFT 13,498 - 15,608

Disclaimer: All pictures, plans, layouts, information, data and details included in this brochure are indicative only and may change at any time up to the final 'as built' status in accordance with final designs of the project, regulatory approvals and planning permissions. All accessories and interior finishes such as wallpaper, chandeliers, furniture, electronics, white goods, curtains, hard and soft landscaping, pavements, features, gym, and other elements displayed in the brochure, or between the plot boundary, are not part of the unit and are shown for illustrative purposes only.

PLOT SIZE / SQM 2,476 - 2,881

SQFT 26,651 - 31,011

Including total indoor & outdoor built up area.



GOLF VIEWS

SEA VIEWS



T/ERRA VIVA

DIAMANTE VILLAS

6 - BED	SQM 1,254 - 1,450
	SQFT 13,498 - 15,608

PLOT SIZE

SQM 2,476 - 2,881

SQFT 26,651 - 31,011

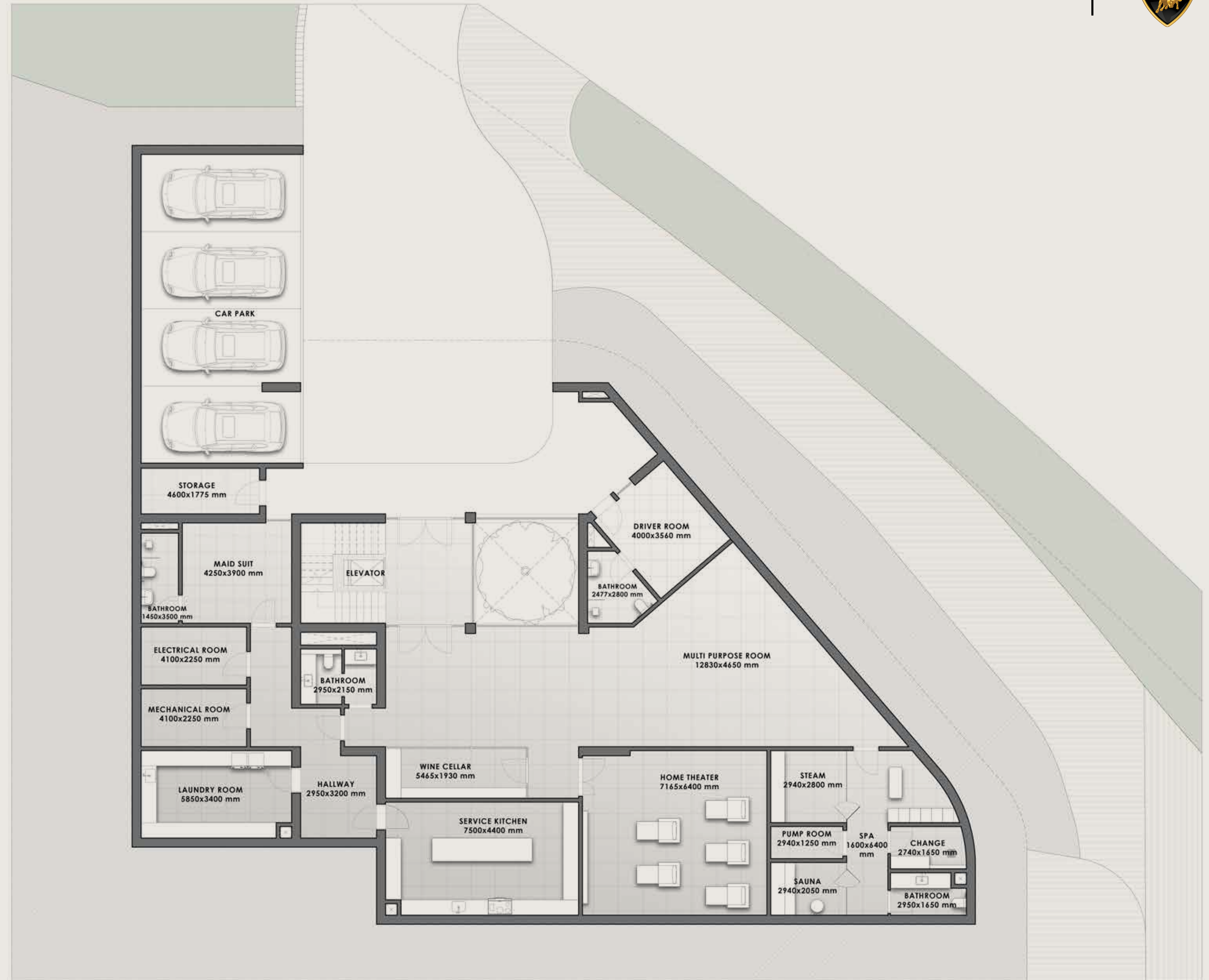
Including total indoor & outdoor built up area.



BASEMENT

Disclaimer: All pictures, plans, layouts, information, data and details included in this brochure are indicative only and may change at any time up to the final 'as built' status in accordance with final designs of the project, regulatory approvals and planning permissions. All accessories and interior finishes such as wallpaper, chandeliers, furniture, electronics, white goods, curtains, hard and soft landscaping, pavements, features, gym, and other elements displayed in the brochure, or between the plot boundary, are not part of the unit and are shown for illustrative purposes only.

DARGLOBAL





DIAMANTE VILLAS

6 - BED	SQM 1,254 - 1,450
	SQFT 13,498 - 15,608
PLOT SIZE	
SQM	2,476 - 2,881
SQFT	26,651 - 31,011

Including total indoor & outdoor built up area.



GROUND FLOOR



Disclaimer: All pictures, plans, layouts, information, data and details included in this brochure are indicative only and may change at any time up to the final 'as built' status in accordance with final designs of the project, regulatory approvals and planning permissions. All accessories and interior finishes such as wallpaper, chandeliers, furniture, electronics, white goods, curtains, hard and soft landscaping, pavements, features, gym, and other elements displayed in the brochure, or between the plot boundary, are not part of the unit and are shown for illustrative purposes only.



DIAMANTE VILLAS

6 - BED	SQM 1,254 - 1,450
	SQFT 13,498 - 15,608

PLOT SIZE

SQM 2,476 - 2,881

SQFT 26,651 - 31,011

Including total indoor & outdoor built up area.



FIRST FLOOR



Disclaimer: All pictures, plans, layouts, information, data and details included in this brochure are indicative only and may change at any time up to the final 'as built' status in accordance with final designs of the project, regulatory approvals and planning permissions. All accessories and interior finishes such as wallpaper, chandeliers, furniture, electronics, white goods, curtains, hard and soft landscaping, pavements, features, gym, and other elements displayed in the brochure, or between the plot boundary, are not part of the unit and are shown for illustrative purposes only.



DIAMANTE VILLAS

6 - B E D	SQM 1,254 - 1,450
	SQFT 13,498 - 15,608

PLOT SIZE

SQM 2,476 - 2,881

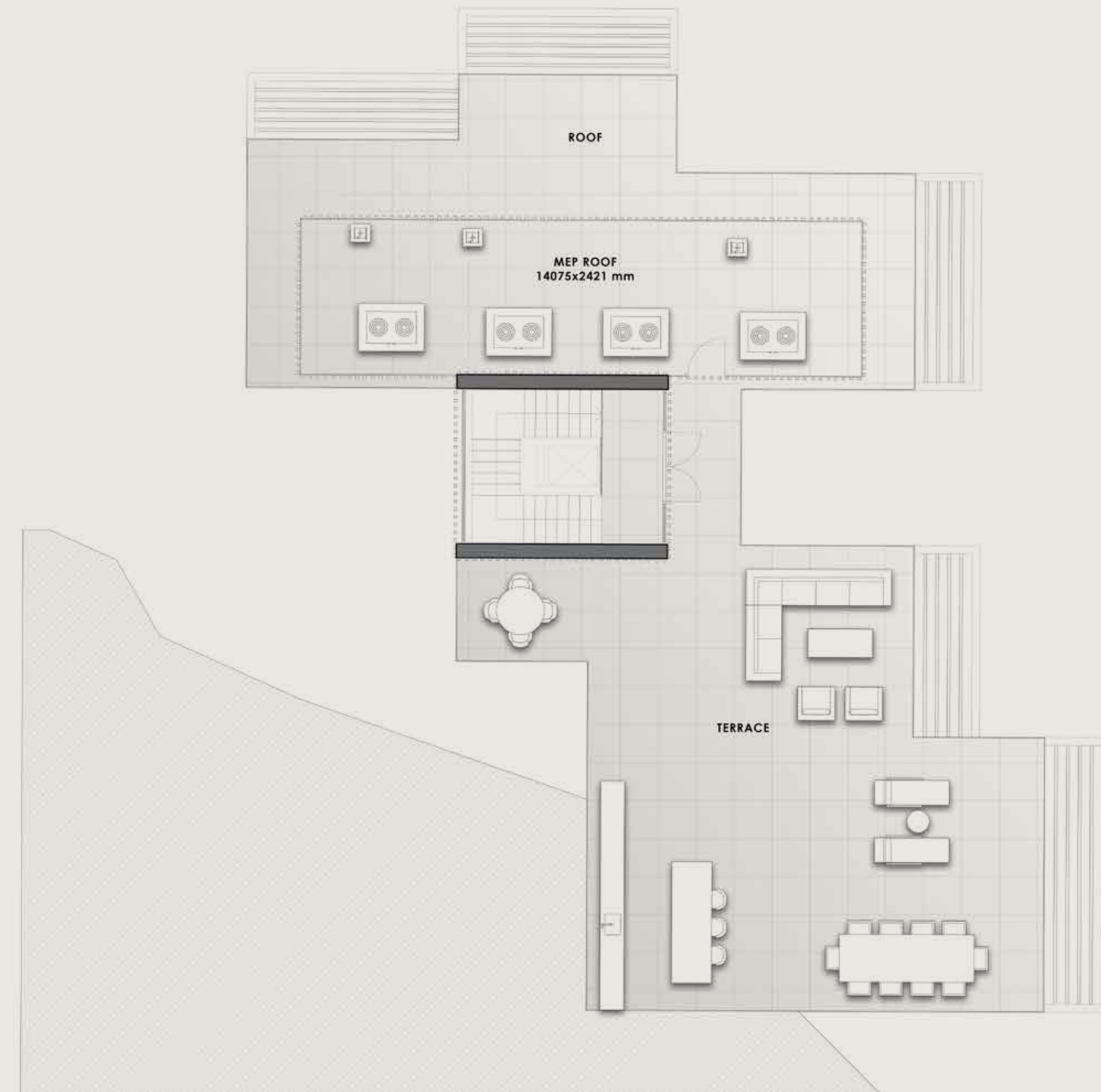
SQFT 26,651 - 31,011

Including total indoor & outdoor built up area.



ROOFTOP
TERRACE

Disclaimer: All pictures, plans, layouts, information, data and details included in this brochure are indicative only and may change at any time up to the final 'as built' status in accordance with final designs of the project, regulatory approvals and planning permissions. All accessories and interior finishes such as wallpaper, chandeliers, furniture, electronics, white goods, curtains, hard and soft landscaping, pavements, features, gym, and other elements displayed in the brochure, or between the plot boundary, are not part of the unit and are shown for illustrative purposes only.





ZAFIRO VILLAS

5 - B E D

SQM 863 - 1,034

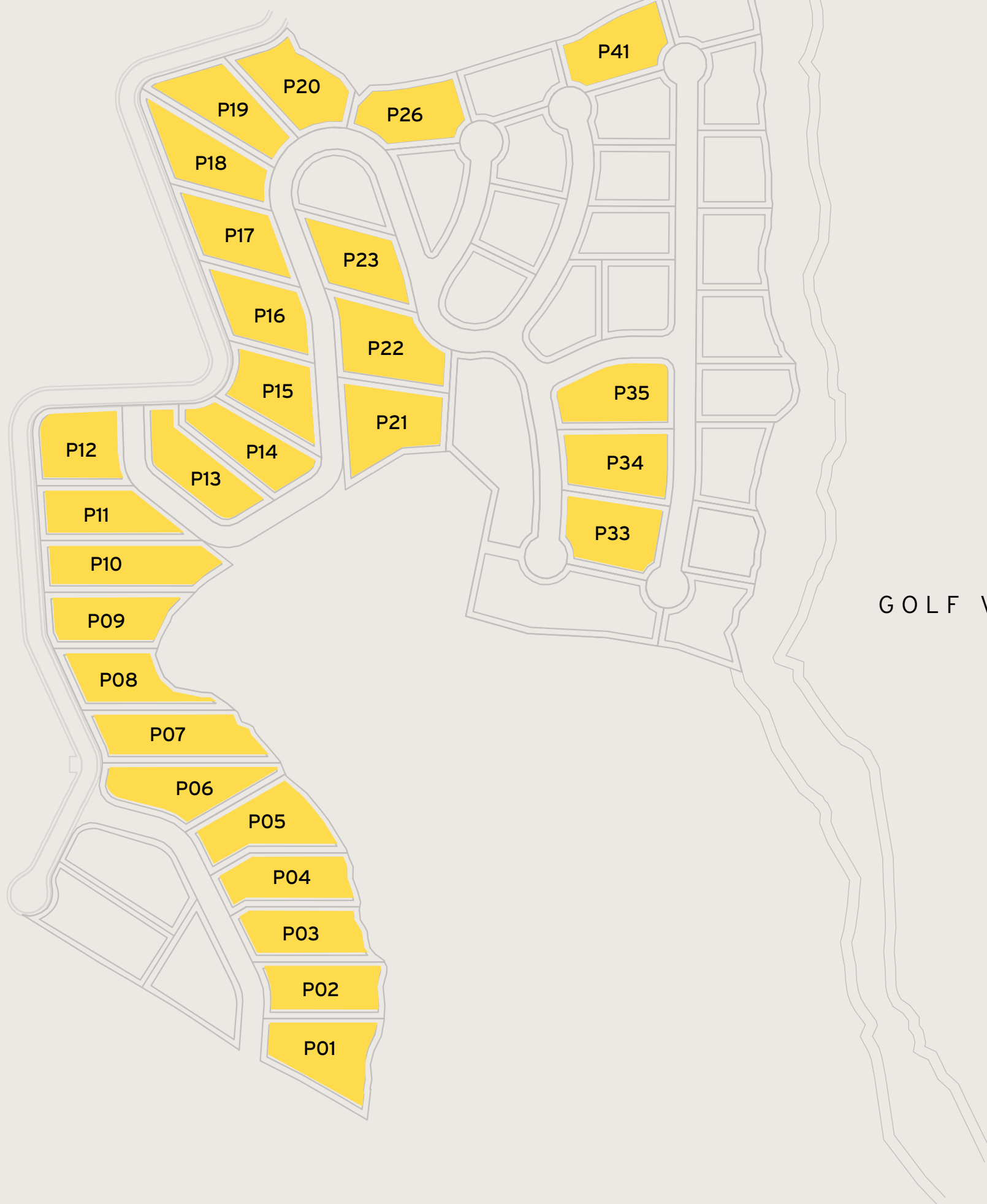
SQFT 9,289 - 11,130

Disclaimer: All pictures, plans, layouts, information, data and details included in this brochure are indicative only and may change at any time up to the final 'as built' status in accordance with final designs of the project, regulatory approvals and planning permissions. All accessories and interior finishes such as wallpaper, chandeliers, furniture, electronics, white goods, curtains, hard and soft landscaping, pavements, features, gym, and other elements displayed in the brochure, or between the plot boundary, are not part of the unit and are shown for illustrative purposes only.

PLOT SIZE / **SQM** 1,389 - 1,874

SQFT 14,951 - 20,172

Including total indoor & outdoor built up area.



GOLF VIEWS

SEA VIEWS





ZAFIRO VILLAS

5 - BED	SQM 863 - 1,034
	SQFT 9,289 - 11,130
PLOT SIZE	
SQM	1,389 - 1,874
SQFT	14,951 - 20,172

Including total indoor & outdoor built up area.



BASEMENT



Disclaimer: All pictures, plans, layouts, information, data and details included in this brochure are indicative only and may change at any time up to the final 'as built' status in accordance with final designs of the project, regulatory approvals and planning permissions. All accessories and interior finishes such as wallpaper, chandeliers, furniture, electronics, white goods, curtains, hard and soft landscaping, pavements, features, gym, and other elements displayed in the brochure, or between the plot boundary, are not part of the unit and are shown for illustrative purposes only.



ZAFIRO VILLAS

5 - B E D	SQM 863 - 1,034
	SQFT 9,289 - 11,130

PLOT SIZE	
SQM	1,389 - 1,874
SQFT	14,951 - 20,172

Including total indoor & outdoor built up area.



**GROUND
FLOOR**



Disclaimer: All pictures, plans, layouts, information, data and details included in this brochure are indicative only and may change at any time up to the final 'as built' status in accordance with final designs of the project, regulatory approvals and planning permissions. All accessories and interior finishes such as wallpaper, chandeliers, furniture, electronics, white goods, curtains, hard and soft landscaping, pavements, features, gym, and other elements displayed in the brochure, or between the plot boundary, are not part of the unit and are shown for illustrative purposes only.



ZAFIRO VILLAS

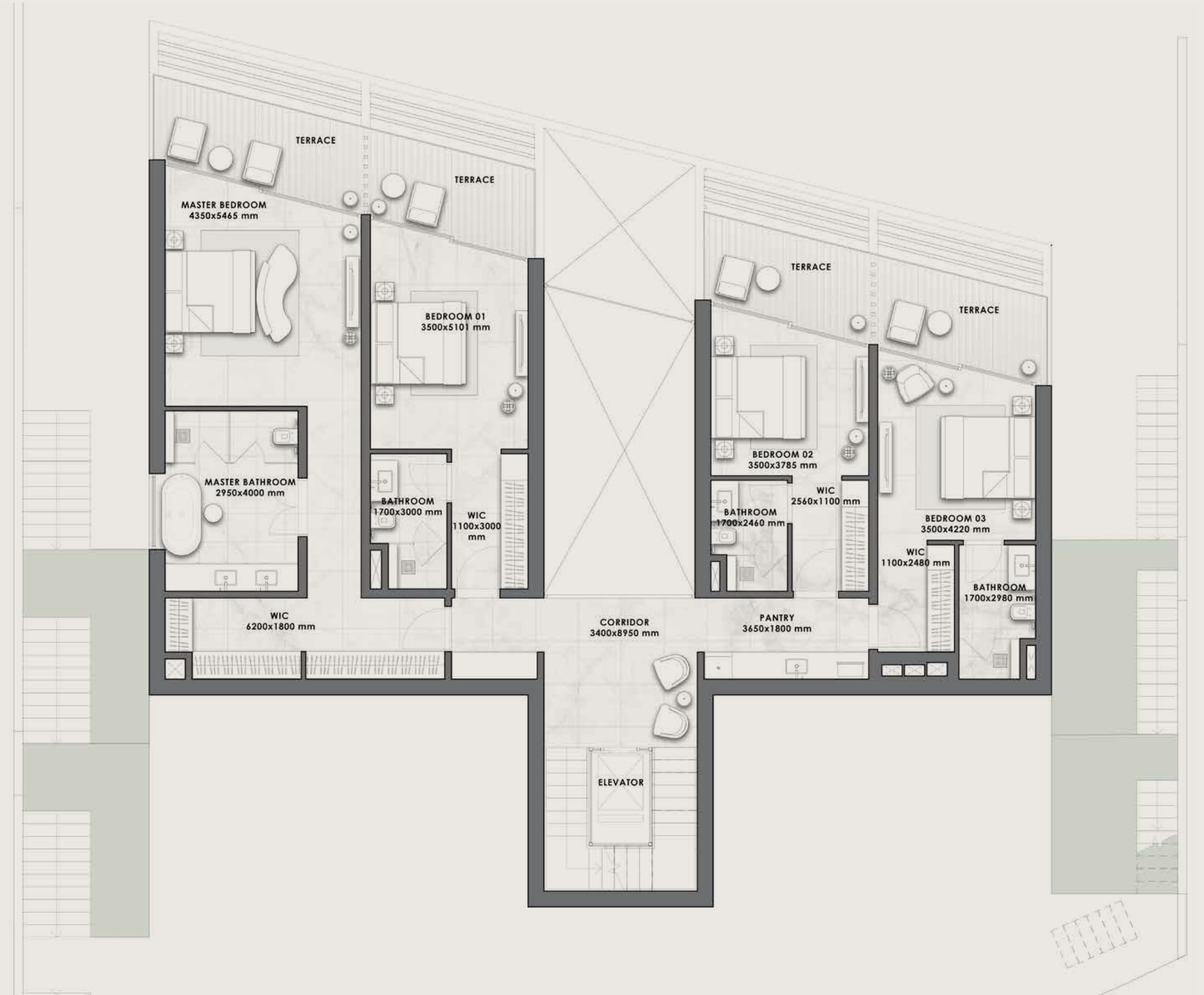
5 - BED	SQM 863 - 1,034
	SQFT 9,289 - 11,130

PLOT SIZE	
SQM	1,389 - 1,874
SQFT	14,951 - 20,172

Including total indoor & outdoor built up area.



FIRST FLOOR



Disclaimer: All pictures, plans, layouts, information, data and details included in this brochure are indicative only and may change at any time up to the final 'as built' status in accordance with final designs of the project, regulatory approvals and planning permissions. All accessories and interior finishes such as wallpaper, chandeliers, furniture, electronics, white goods, curtains, hard and soft landscaping, pavements, features, gym, and other elements displayed in the brochure, or between the plot boundary, are not part of the unit and are shown for illustrative purposes only.

T/ERRA V/VA

ZAFIRO VILLAS

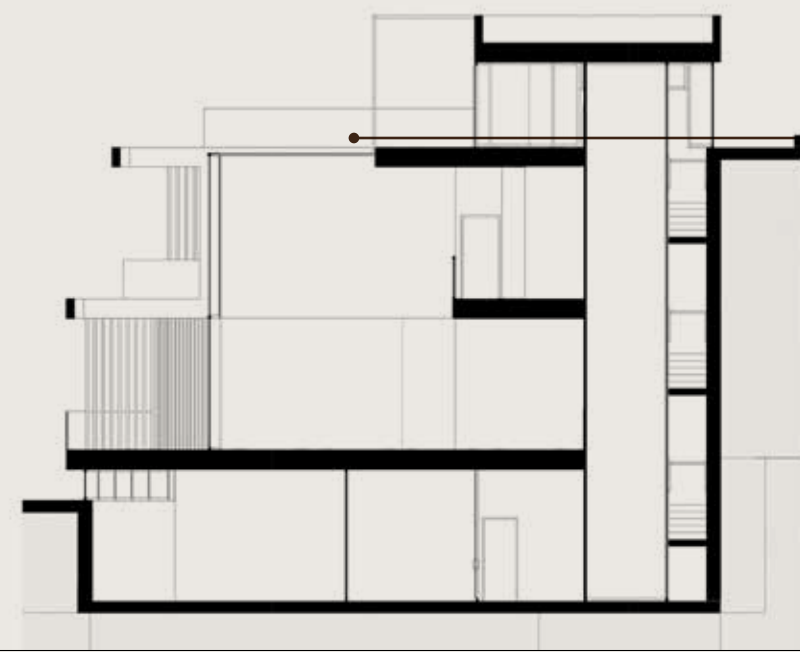
5 - B E D	SQM 863 - 1,034
	SQFT 9,289 - 11,130

PLOT SIZE

SQM 1,389 - 1,874

SQFT 14,951 - 20,172

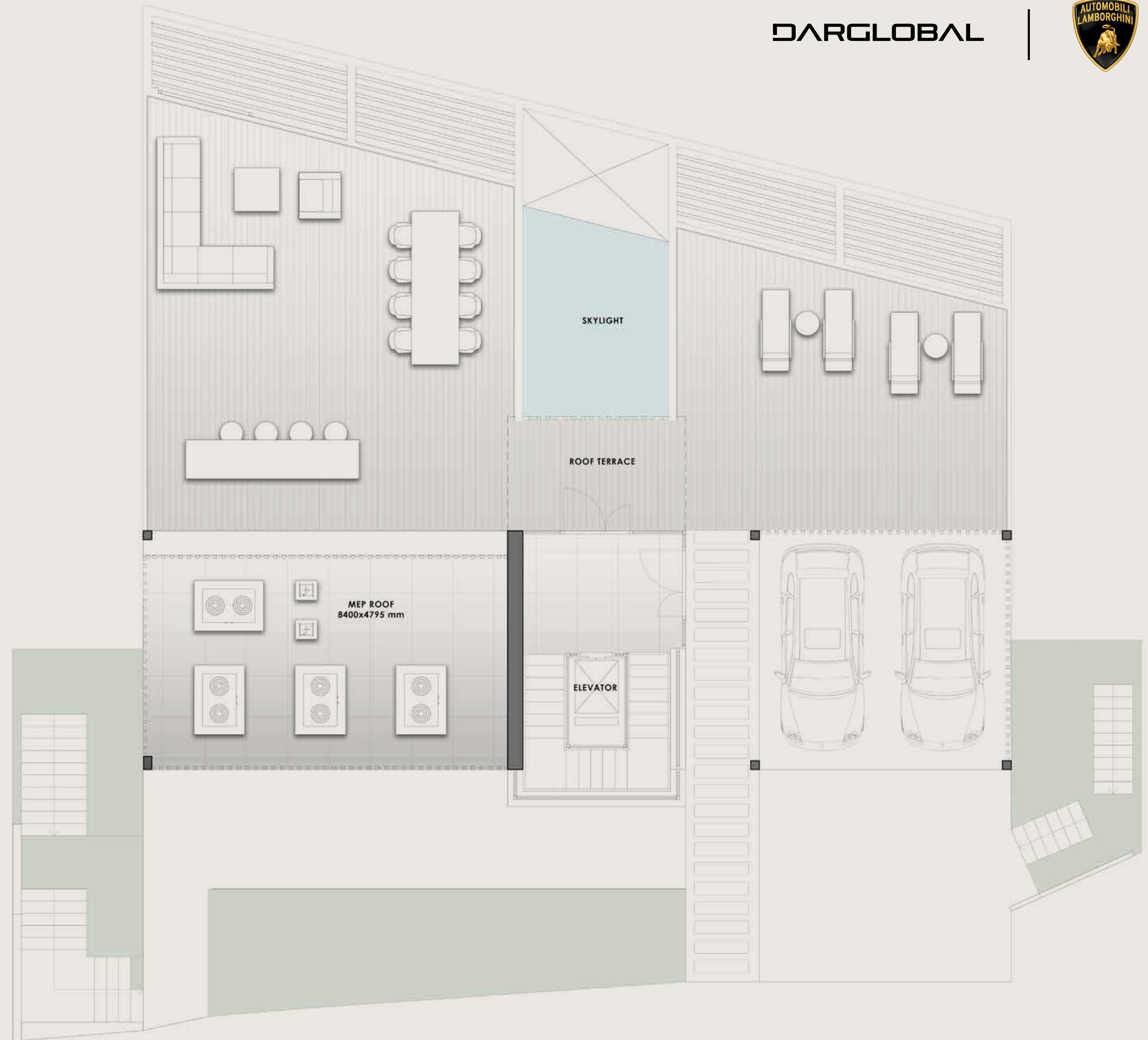
Including total indoor & outdoor built up area.



ROOFTOP
TERRACE

Disclaimer: All pictures, plans, layouts, information, data and details included in this brochure are indicative only and may change at any time up to the final 'as built' status in accordance with final designs of the project, regulatory approvals and planning permissions. All accessories and interior finishes such as wallpaper, chandeliers, furniture, electronics, white goods, curtains, hard and soft landscaping, pavements, features, gym, and other elements displayed in the brochure, or between the plot boundary, are not part of the unit and are shown for illustrative purposes only.

DARGLOBAL





ESMERALDA VILLAS

4 - B E D

SQM 680 - 822

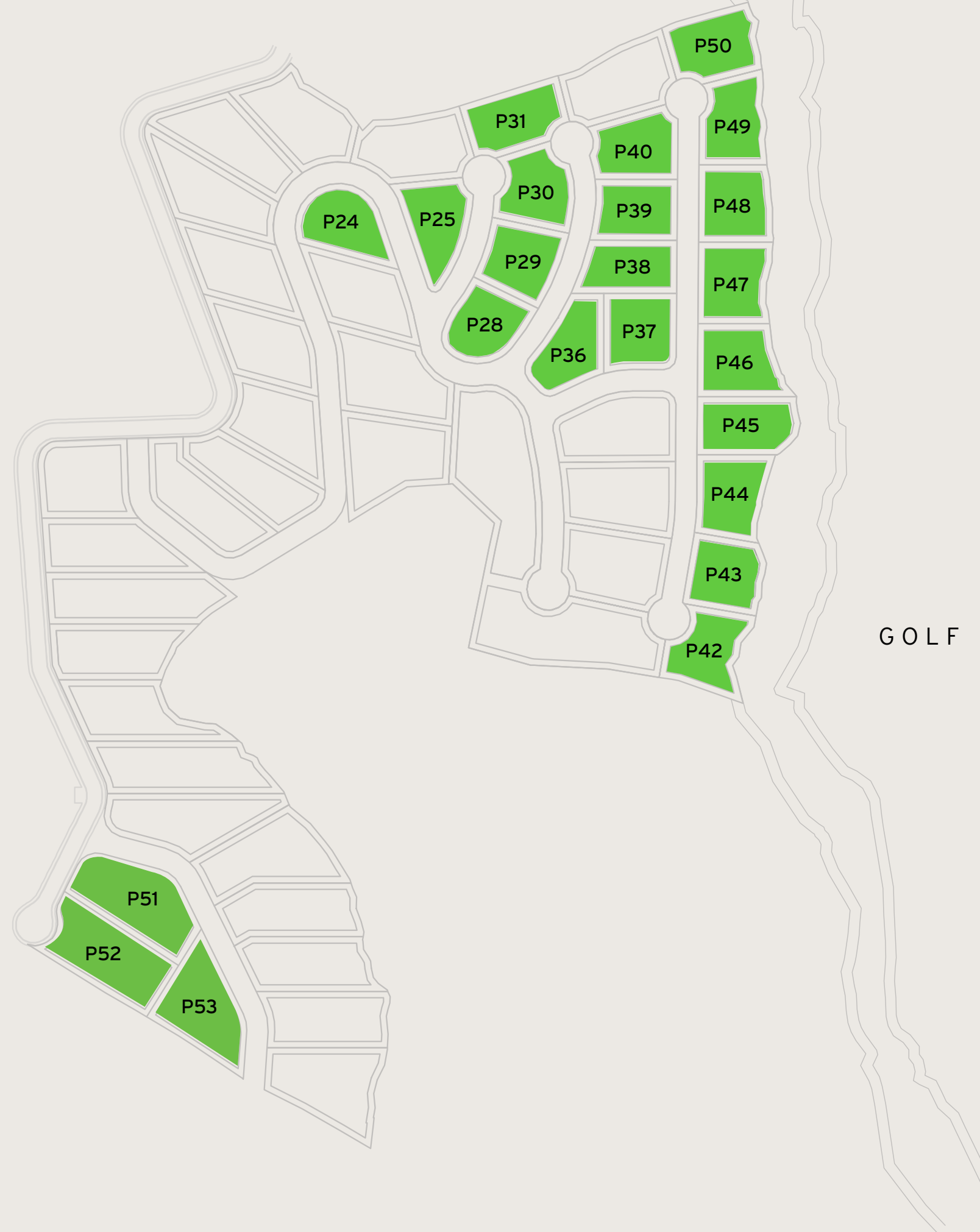
SQFT 7,320 - 8,848

Disclaimer: All pictures, plans, layouts, information, data and details included in this brochure are indicative only and may change at any time up to the final 'as built' status in accordance with final designs of the project, regulatory approvals and planning permissions. All accessories and interior finishes such as wallpaper, chandeliers, furniture, electronics, white goods, curtains, hard and soft landscaping, pavements, features, gym, and other elements displayed in the brochure, or between the plot boundary, are not part of the unit and are shown for illustrative purposes only.

PLOT SIZE / SQM 1,005 - 1,669

SQFT 10,818 - 17,965

Including total indoor & outdoor built up area.



GOLF VIEWS

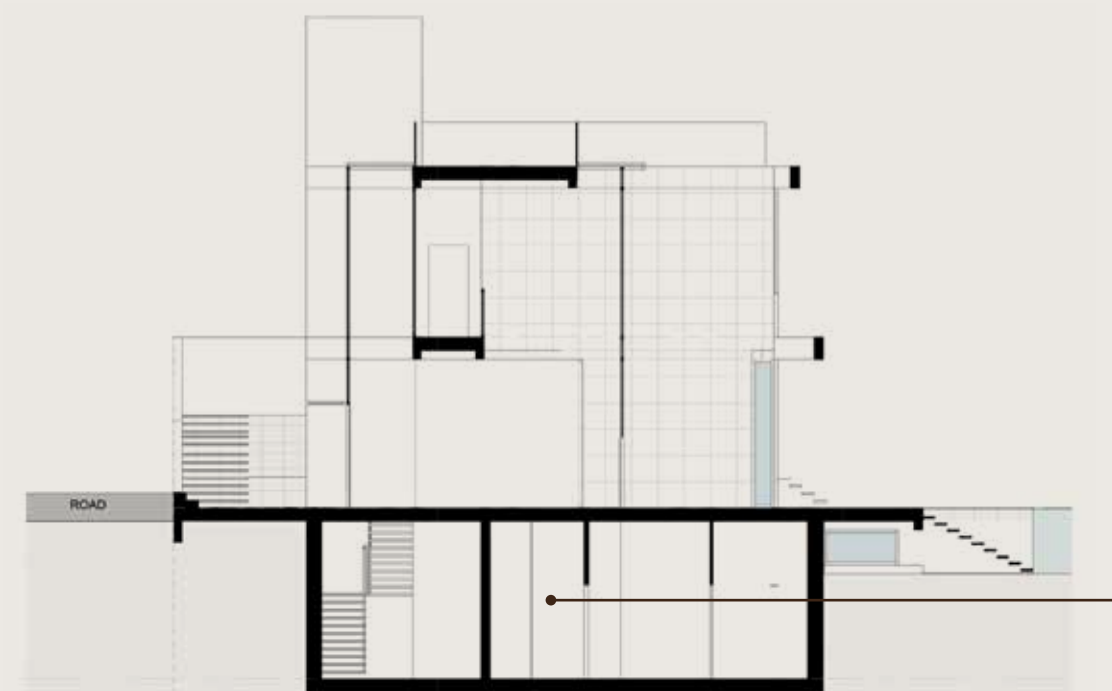
SEA VIEWS



ESMERALDA VILLAS

4 - BED	SQM 680 - 822
	SQFT 7,320 - 8,848
PLOT SIZE	
SQM	1,005 - 1,669
SQFT	10,818 - 17,965

Including total indoor & outdoor built up area.



BASEMENT

Disclaimer: All pictures, plans, layouts, information, data and details included in this brochure are indicative only and may change at any time up to the final 'as built' status in accordance with final designs of the project, regulatory approvals and planning permissions. All accessories and interior finishes such as wallpaper, chandeliers, furniture, electronics, white goods, curtains, hard and soft landscaping, pavements, features, gym, and other elements displayed in the brochure, or between the plot boundary, are not part of the unit and are shown for illustrative purposes only.



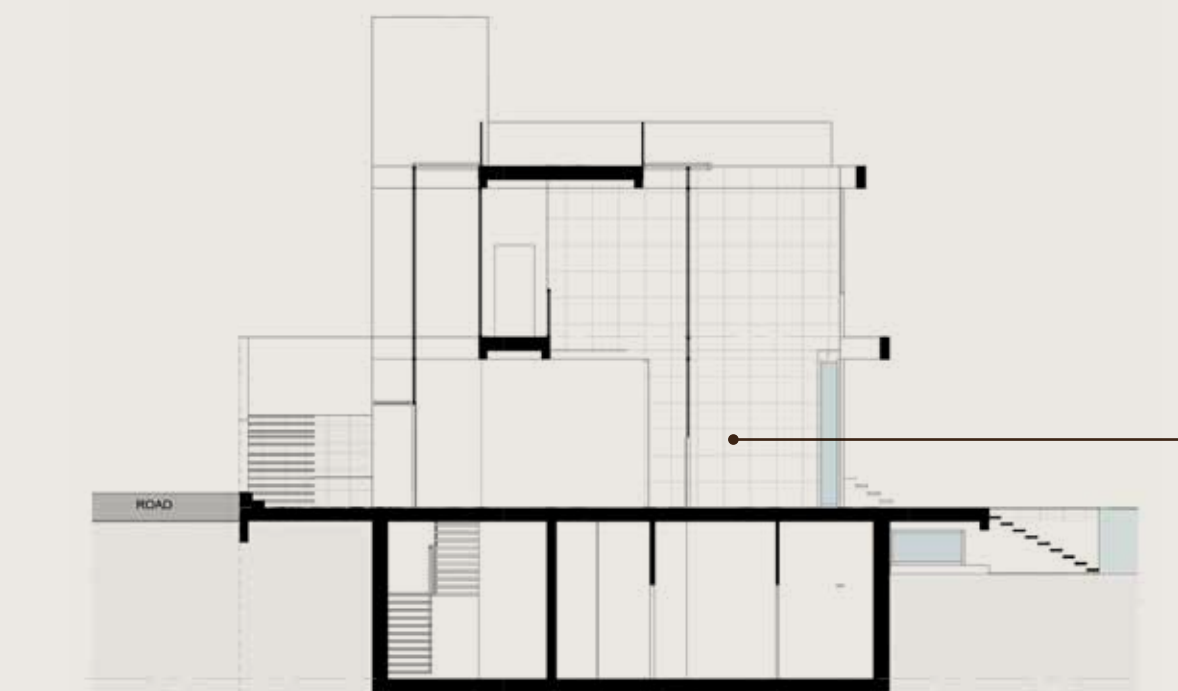


ESMERALDA VILLAS

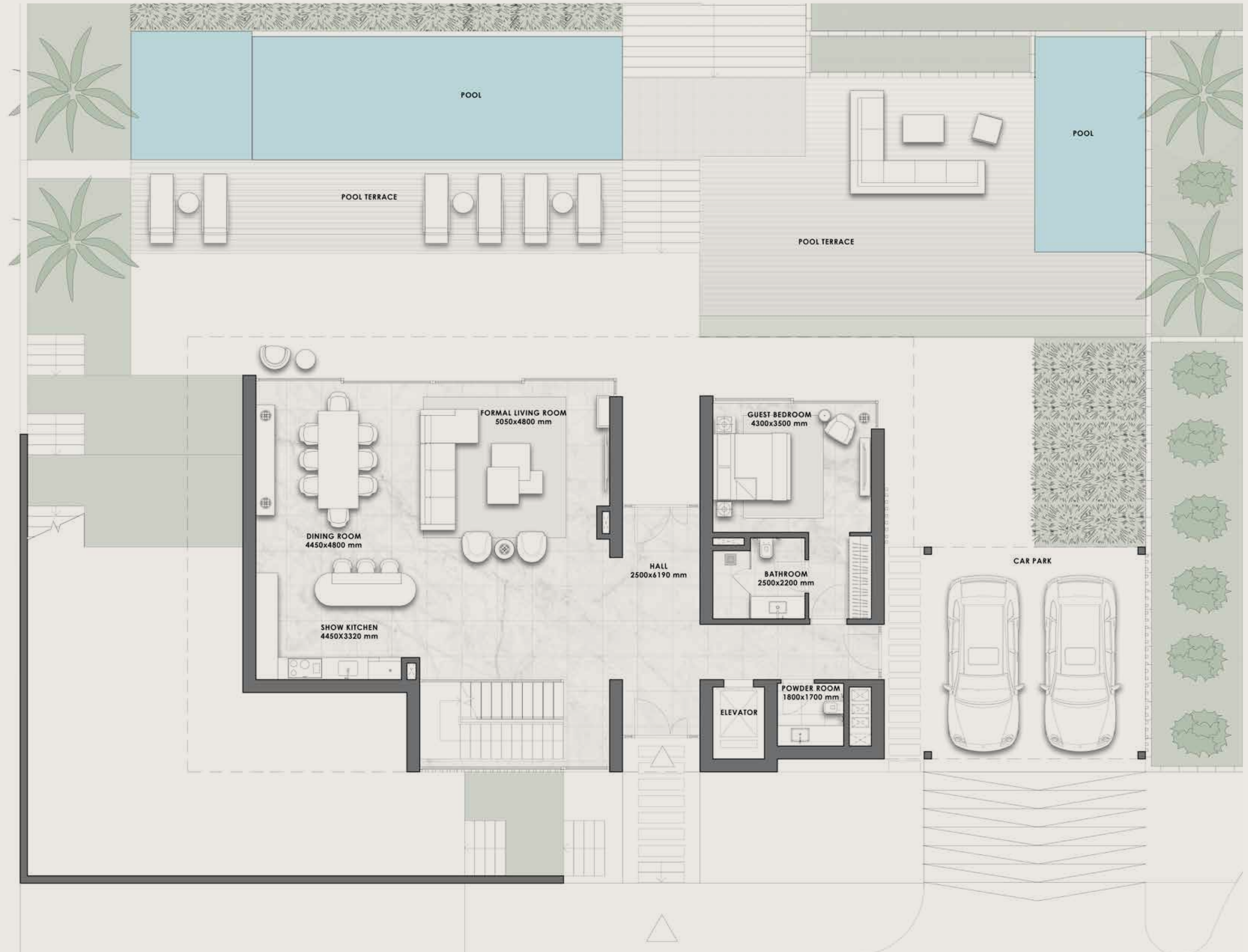
4 - BED	SQM 680 - 822
	SQFT 7,320 - 8,848

PLOT SIZE	
SQM	1,005 - 1,669
SQFT	10,818 - 17,965

Including total indoor & outdoor built up area.



GROUND FLOOR



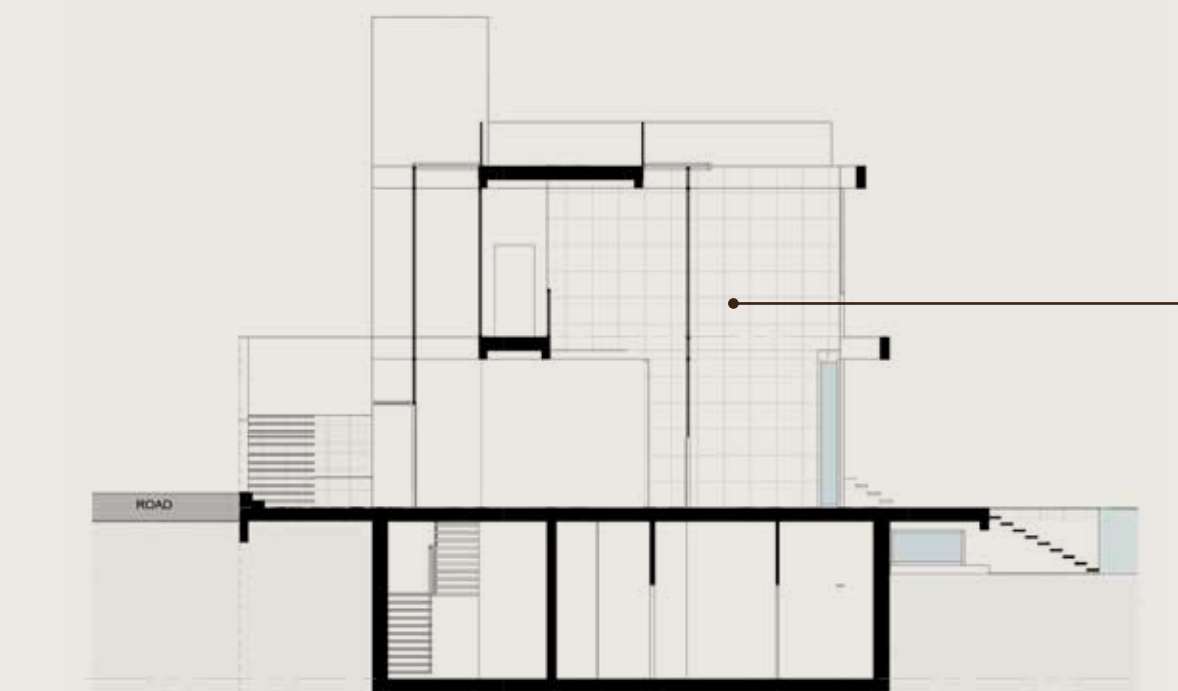
Disclaimer: All pictures, plans, layouts, information, data and details included in this brochure are indicative only and may change at any time up to the final 'as built' status in accordance with final designs of the project, regulatory approvals and planning permissions. All accessories and interior finishes such as wallpaper, chandeliers, furniture, electronics, white goods, curtains, hard and soft landscaping, pavements, features, gym, and other elements displayed in the brochure, or between the plot boundary, are not part of the unit and are shown for illustrative purposes only.



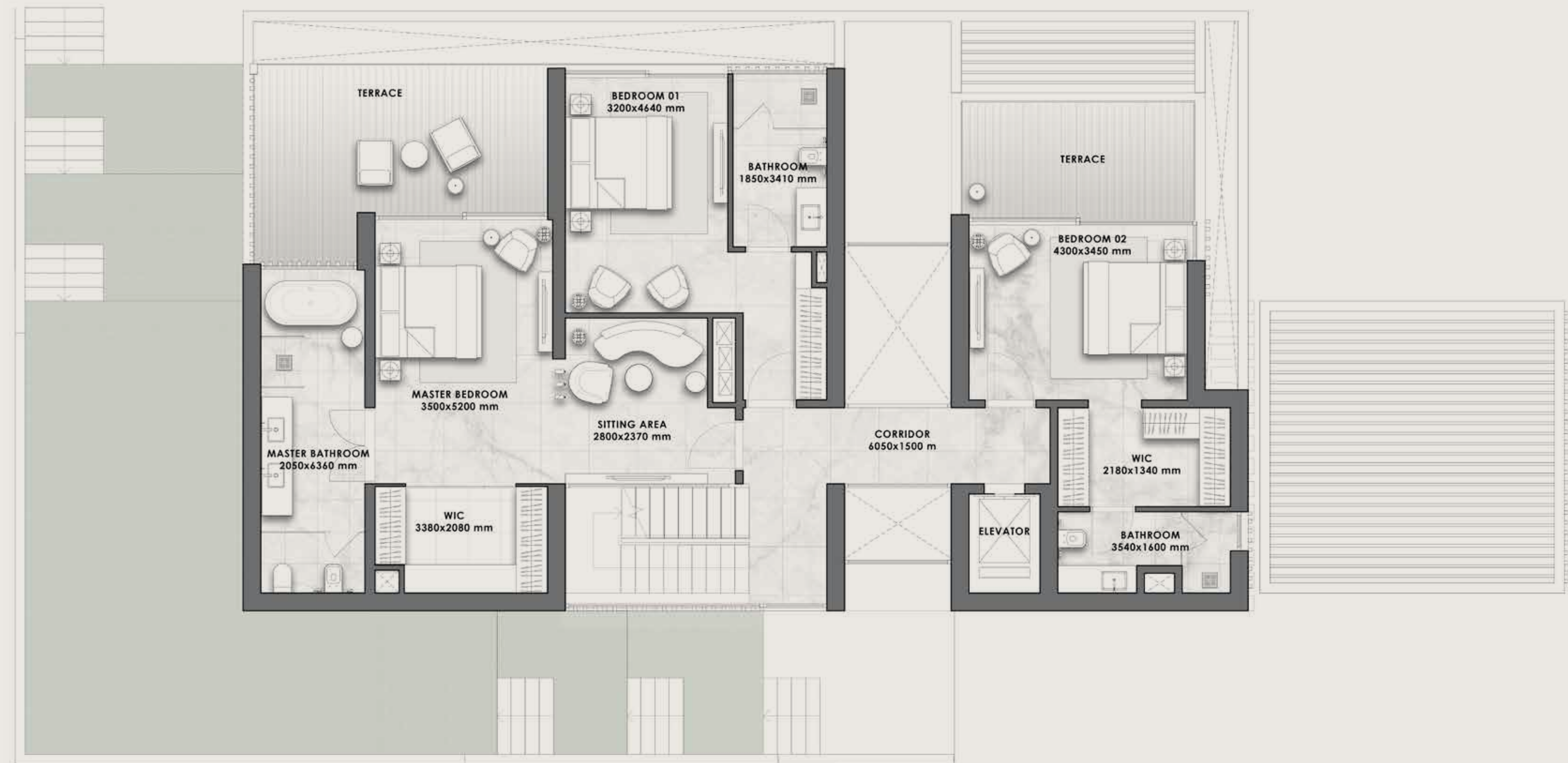
ESMERALDA VILLAS

4 - BED	SQM 680 - 822
	SQFT 7,320 - 8,848
PLOT SIZE	
SQM	1,005 - 1,669
SQFT	10,818 - 17,965

Including total indoor & outdoor built up area.



FIRST FLOOR



Disclaimer: All pictures, plans, layouts, information, data and details included in this brochure are indicative only and may change at any time up to the final 'as built' status in accordance with final designs of the project, regulatory approvals and planning permissions. All accessories and interior finishes such as wallpaper, chandeliers, furniture, electronics, white goods, curtains, hard and soft landscaping, pavements, features, gym, and other elements displayed in the brochure, or between the plot boundary, are not part of the unit and are shown for illustrative purposes only.

T/ERRA V/VA

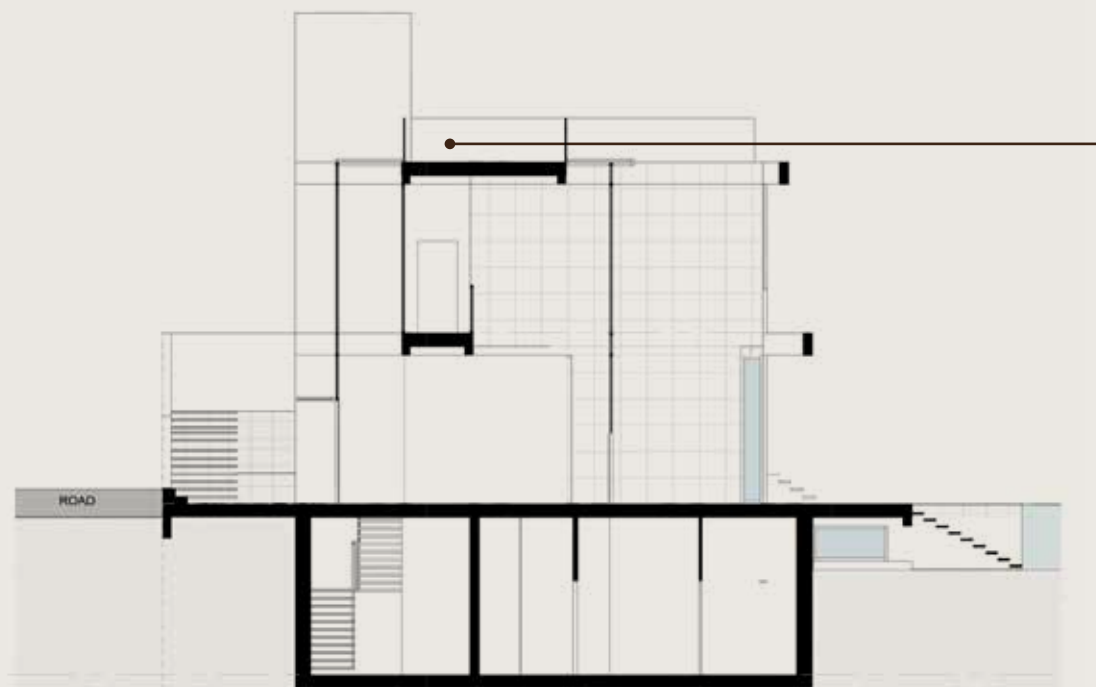
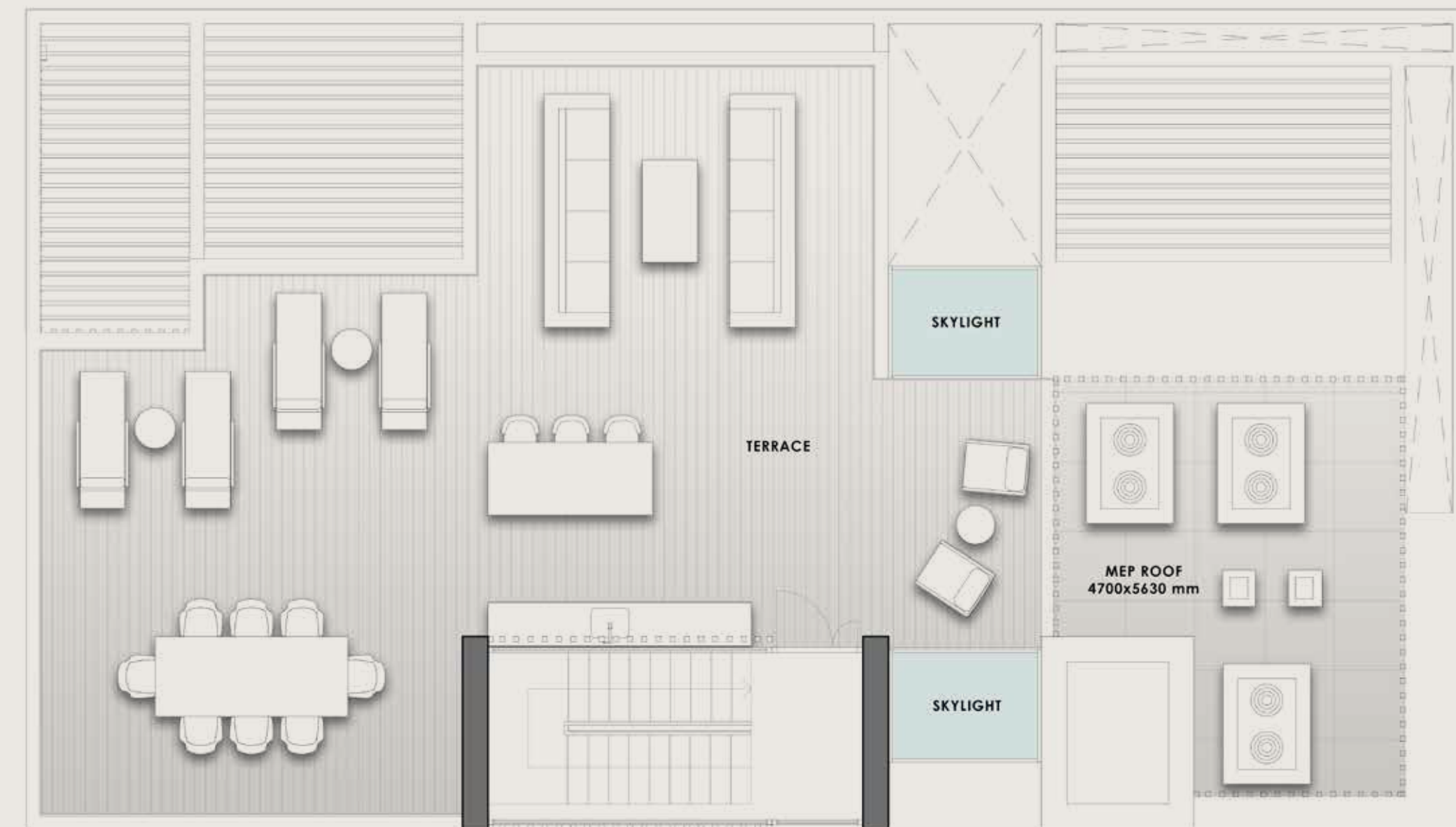
DARGLOBAL



ESMERALDA VILLAS

4 - B E D	SQM 680 - 822
	SQFT 7,320 - 8,848
PLOT SIZE	
SQM	1,005 - 1,669
SQFT	10,818 - 17,965

Including total indoor & outdoor built up area.



ROOFTOP TERRACE

Disclaimer: All pictures, plans, layouts, information, data and details included in this brochure are indicative only and may change at any time up to the final 'as built' status in accordance with final designs of the project, regulatory approvals and planning permissions. All accessories and interior finishes such as wallpaper, chandeliers, furniture, electronics, white goods, curtains, hard and soft landscaping, pavements, features, gym, and other elements displayed in the brochure, or between the plot boundary, are not part of the unit and are shown for illustrative purposes only.

Automobili Lamborghini S.p.A.

Founded in 1963, Automobili Lamborghini is headquartered in Sant'Agata Bolognese, in the province of Bologna, and produces some of the most desirable super sports cars in the world. Still rooted in its historic headquarters in the heart of Motorvalley, Lamborghini is synonymous with the highest technological expertise in the design and production of engines with extraordinary performance. The design of each model has always been unique: the language of forms is visionary and ahead of its time.

Brave, unexpected and authentic: the three values of the Sant'Agata Bolognese brand are reflected in the three models in the range, the V8 engine with Super SUV Urus, the perfect combination of power, performance, comfort and driving versatility and two super sports

cars with naturally aspirated V10 and V12 engines, the Huracán and the Aventador successor, the newborn Revuelto, the starting point to the "Direzione Cor Tauri", the hybridization and electrification of the whole Lamborghini range.

Automobili Lamborghini is today a global company with a balanced presence in the three macro-regions America, Europe/ Middle-East/Africa and Asia Pacific. Based on record commercial and financial results and in constant growth and with the support and passion of over 2,000 employees, Lamborghini is now aiming for an increasingly sustainable future, up to the introduction of a fourth model full electric, while still fully respecting the values and DNA of the brand.



DARGLOBAL

LISTED ON THE
LONDON STOCK EXCHANGE



Established in 2017 to upend the global luxury real estate market, DarGlobal combines experience and innovation to deliver the highest quality properties. World-class architects curate DarGlobal's homes that are modelled by renowned design icons; each DarGlobal home is built with the highest quality materials and maintained by experts within the field.

DarGlobal believes there is no better investment than an investment in luxury and takes pride in choosing the best-in-class locations and properties to provide lucrative investment opportunities for a distinct clientele.

BUILDING ON THE
LEGACY OF THE
LARGEST REAL
ESTATE COMPANY
IN THE REGION.

7

offices in
different cities
worldwide

29

years of
experience

15K+

residential
units delivered

8.2Bn

USD in assets

500,000 sqm

of commercial space delivered

OUR OFFICES

MARBELLA

SPAIN

-

Marbella Club Golden Mile,
Av. Bulevar Príncipe Alfonso
de Hohenlohe, Marbella
29602, Málaga, Spain
T +34 952 68 76 80

DUBAI

UAE

-

Jumeirah Emirates Towers
30th Floor, Sheikh Zayed Road.
PO Box 2523, Dubai,
United Arab Emirates
T +971 4 247 8999

LONDON

UK

-

50 Hans Crescent,
Knightsbridge, London,
SW1X 0NA, United Kingdom
T +44 7875 495156

MUSCAT

OMAN

-

Royal Opera House Muscat
Shatti Al Qurum, Muscat,
Sultanate of Oman
T +968 2270 2777

DOHA

QATAR

-

Malibu Building,
Lusail Entertainment City,
Doha, Qatar
T +974 800 3536

BEIJING

CHINA

-

303-309, North Tower,
Beijing Kerry Centre,
No.1 Guanghai Road,
Chaoyang District, Beijing
T +86 132 5888 6222

-

For more information on
TIERRA VIVA
please call +34 952 68 76 80

-

You can visit our
website at
darglobal.co.uk
or via our [social media](#)
platforms

T/ERRA V/VA



DARGLOBAL.CO.UK

Dar Al Arkan Spain S.L. shall at all times comply with the requirements established in Law 38/1999, of 5 November, on Building Regulation in relation to the receipt of sums on account prior to the commencement of the works or during the construction period, depositing such sums in a special account set up for this purpose and insuring such sums by means of a joint and several guarantee or surety insurance.